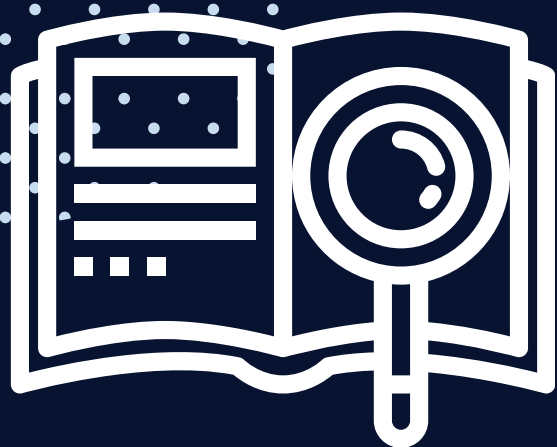


PSYCHOLOGY "DESIGN A STUDY" CHALLENGE



DESIGN A STUDY

Produce a research proposal with the following sections. It is up to you how you present the information. Note you do not have to actually conduct the experiment, but may want to explain your proposed experiment as you would a published scientific report.

Introduction

- Provide background to the topic and the general significance of the problem area
- State your research question, aims and hypotheses
- Literature Review - what has research in the field already told us? Are there any gaps in our knowledge base?
- Justify the necessity of your proposed research

Methods

- **Design:** Demonstrate a logical approach to conducting an appropriate experiment, that ensures you are isolating your variables of interest.
- **Participants:** Who is the target population? (age/socio-economic status, gender, etc.) What sampling technique has been used? Why?
- **Materials:** What equipment (if any) would you use?
- **Procedure:** How would you measure and control appropriate variables? What statistical analysis would you use?

Results

- What do you predict the results will be?
- How will you examine your results?
- How might you present the data to aid clarity (tables, graphs etc.)

Discussion

- Assess the potential implications of the study and any conclusions that could be drawn
- Outline any potential limitations of your proposed experimental design

